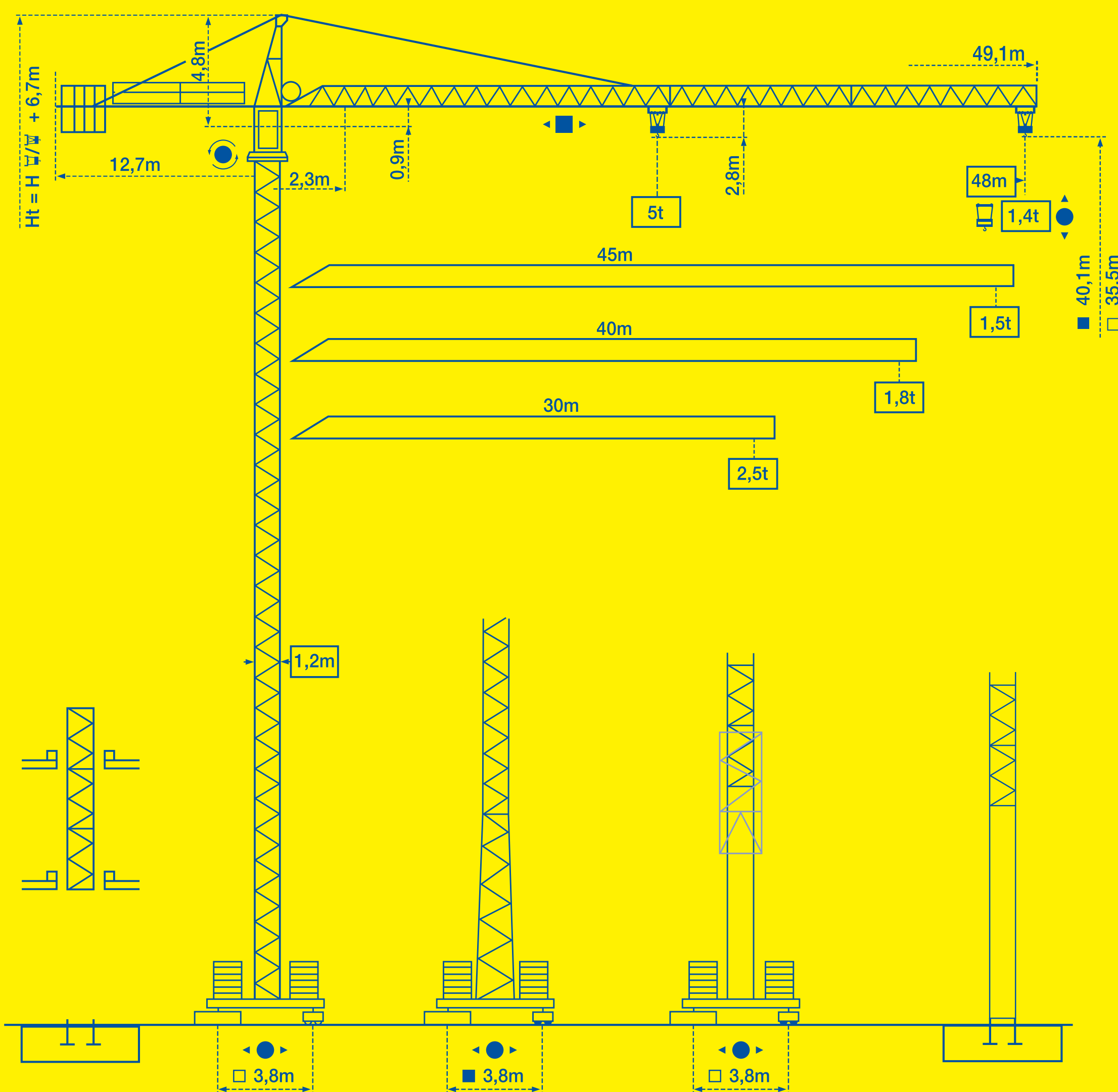


CITY CRANE MC 80



CITY CRANE MC 80

POTAIN



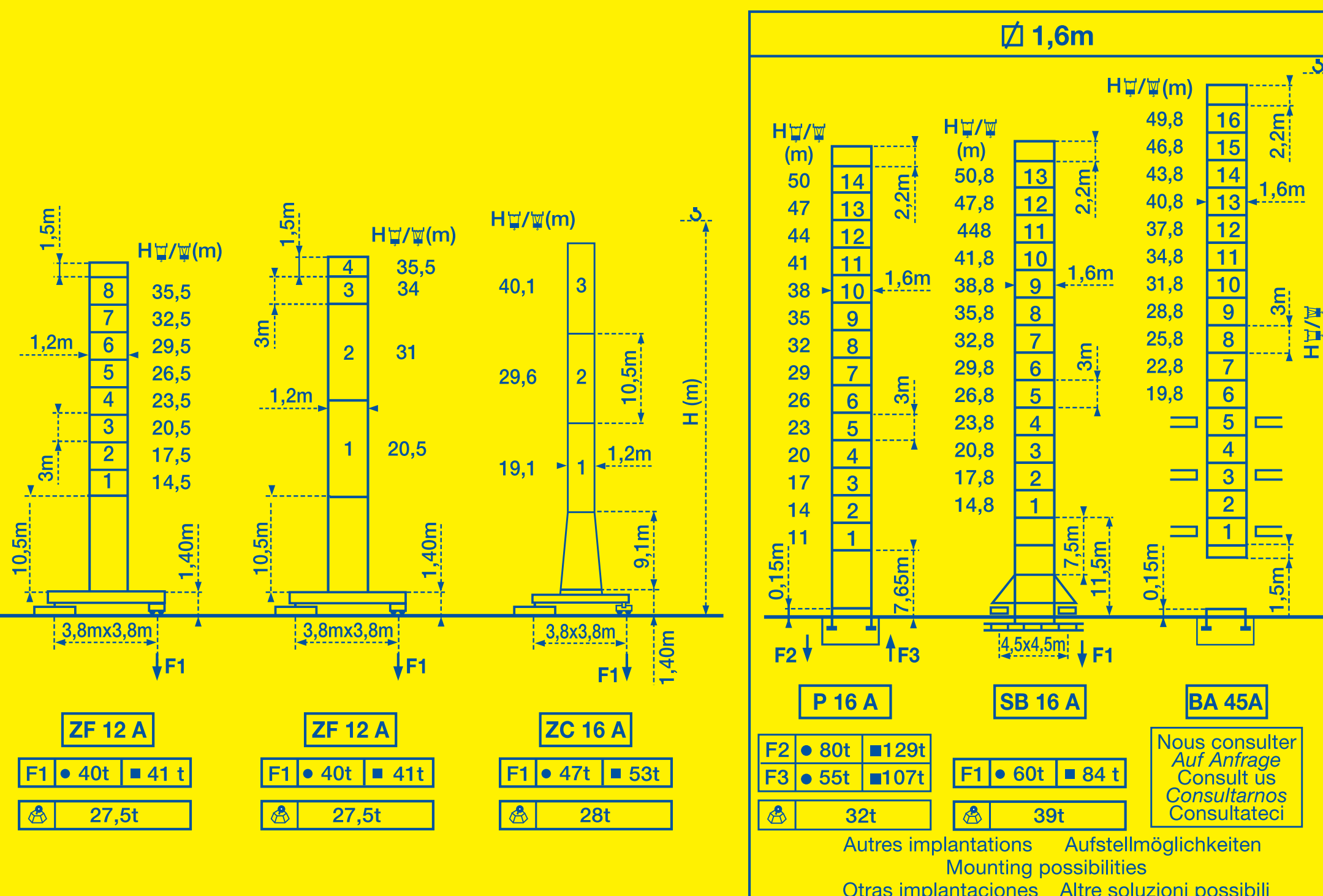
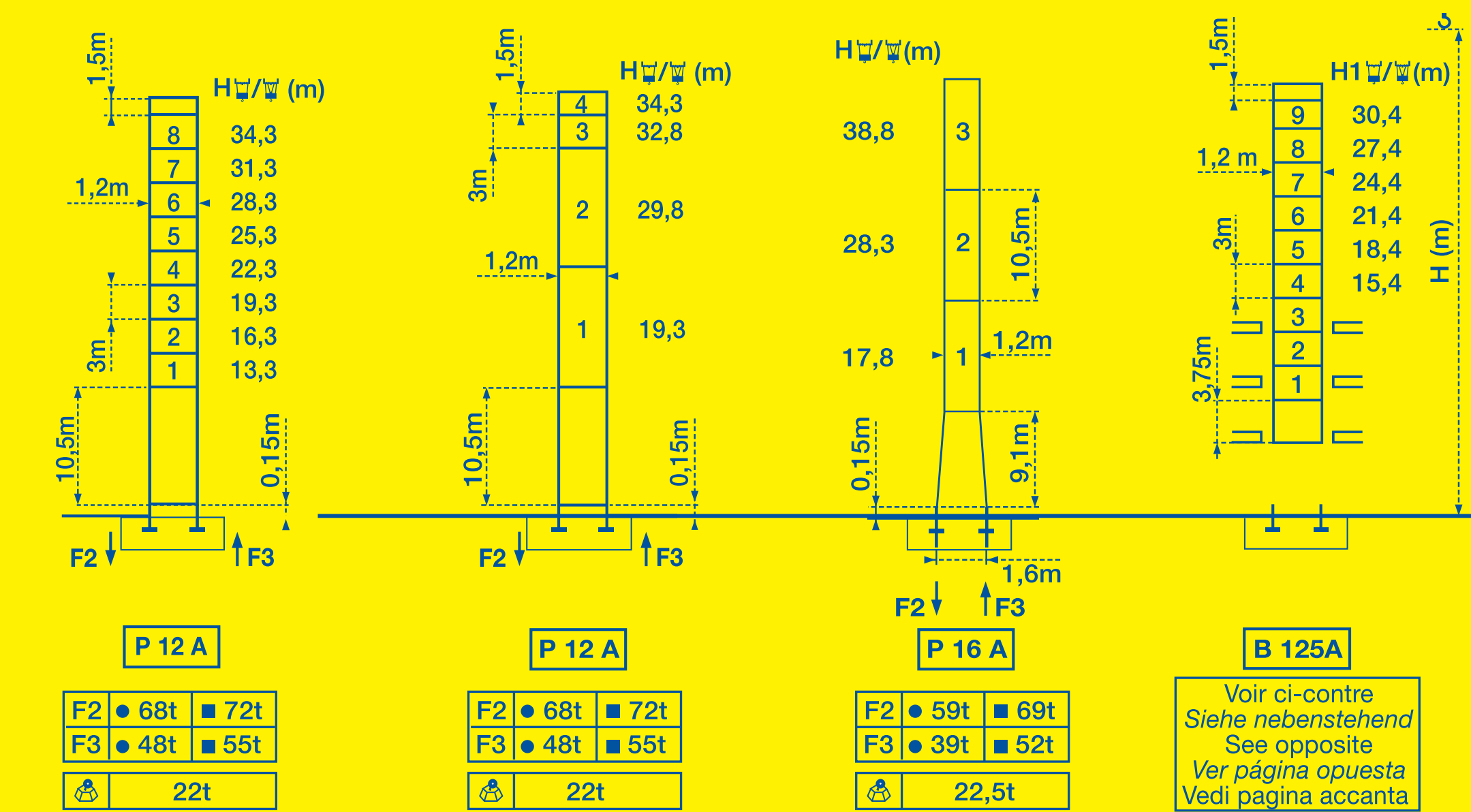
POTAIN CITY CRANE MC 80



1.2m

$H/W + 0.7m$

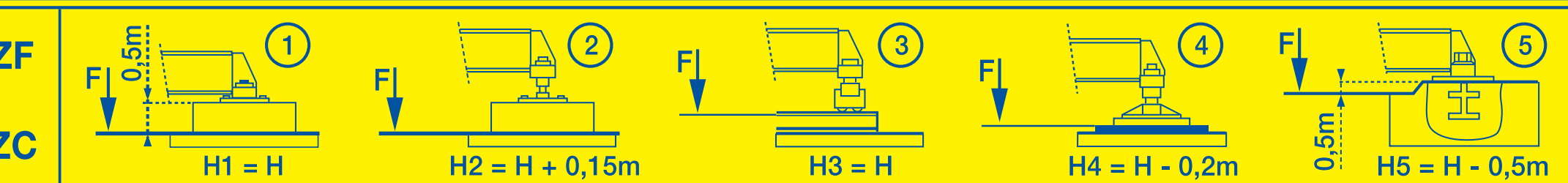
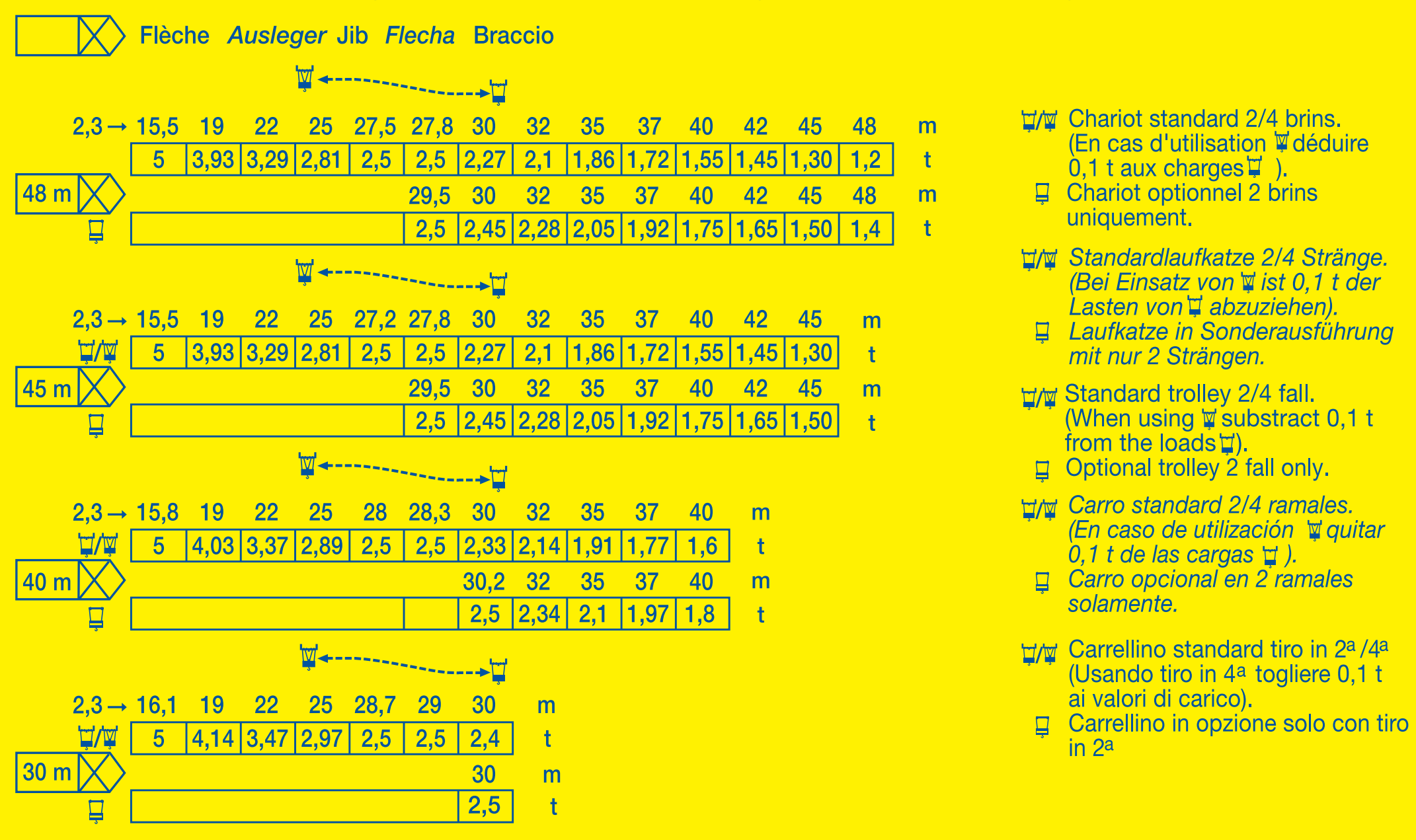
Fleche - Ausleger - Jib
Flecha - Braccio
30m - 48m



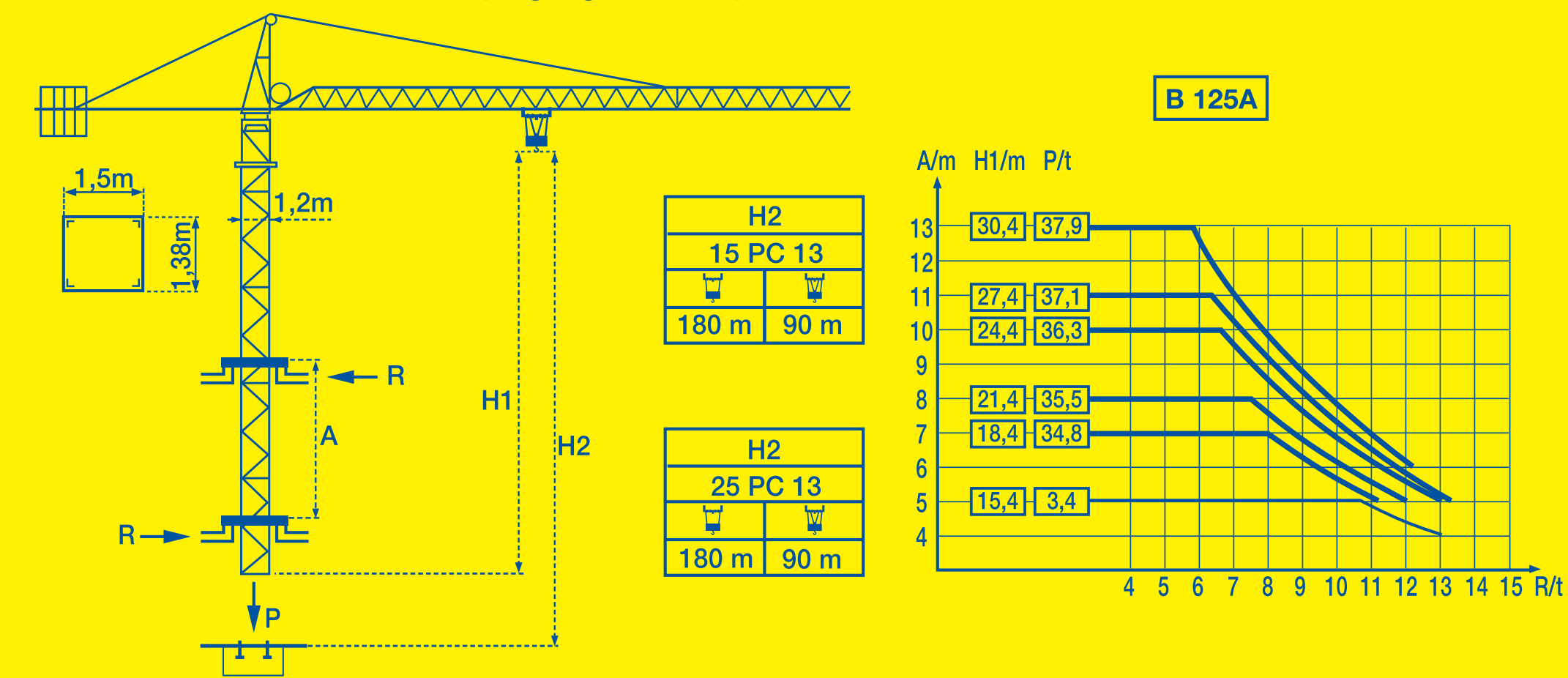
F = Réactions - Eckdrücke - Reactions - Reacciones - Reazioni

LHX 2

Courbes de charges - Lastkurven - Load diagrams - Curvas de cargas - Curve di carico



Télescope sur dalles - Kletterkrane im Gebäude - Climbing crane
Telescopio gruas trepadoras - Gru in cavedito



A Distance entre cadres / Abstand zwischen den Rahmen / Distance between collars / Distancia entre marcos / Distanza fra i telai
 H1 Hauteur grue / H1 Kranhöhe / Crane height / H1 Altura grúa / H1 Altezza gru
 P Poids de la grue (en service) / Krangewicht (in Betrieb) / Crane weight (in service) / Peso de la grúa (en servicio) / Peso della gru (in servizio)
 R Réaction horizontale / Horizontalkräfte / Horizontal reaction / Reaccion horizontal / Reazione orizzontale

• En service / In Betrieb / In service / En servicio / In servizio
 ■ Hors service / Ausser Betrieb / Out of service / Fuera de servicio / Fuori servizio

⚙️ A vide sans lest / Ohne Last und Ballast / Without load and ballast / Sin carga, sin lastre con flecha y altura máxima. / A vuoto senza zavorra e con braccio massimo e altezza massima.

POTAIN CITY CRANE MC 80

Mécanismes - Antriebe - Mechanisms - Mecanismos - Meccanismi

			m/min	t	ch - PS hp	kW	
Levage Heben Hoisting Elevación Sollevamento	15 PC 13		7	2,5	360 m	15	11
			21	2,5			
	25 PC 13		42	1,3	360 m	25	18,4
			3,5	5			
			10,5	5			
			21	2,6			
Distribution - Katzfahren - Trolleying Distribución - Diritubuzione			3 D2 V5	21 - 42	3	2,2	
			4 D3 V3	15-30-58			4
Orientation - Schwenken - Slewing Orientación - Rotazione			RCV 80	0 → 0,8 U/min-rpm	8	5,0	
Translation Kranfahren Travelling Traslación Traslazione			TVD 324 C1	26	2 x 4	2 x 2,9	
			RT 224	25			
Réseau - Netzstrom - Mains supply - Red - Rete elettrica					CEI 38 IEC 38	400V (+6%, -10%) 50Hz	
Puissance électrique nécessaire - Anschlusswert - Necessary electric power Potencia eléctrica necesaria - Potenza elettrica necessaria					15 PC : 25 KVA 25 PC : 35 KVA		
Groupe électrogène - Stromaggregat - Generator set - Gruppo elettrogeno - Gruppo elettrogeno							

*Nous consulter - Auf Anfrage - Consult us - Consultarnos - Consultateci

Conforme aux directives CEE 84/534 et 87/405 sur le niveau acoustique - Gemäss EWG-Richtlinien 84/534 und 87/405 für den Schall-Leistungspegel
In compliance with the EEC 84/534 and 87/405 instructions on noise level - Conforme con las directivas CEE 84/534 y 87/405 sobre el nivel acústico
Conforme alle direttive CEE 84/534 e 87/405 sul livello acustico



Copyright.Reproduction interdite © POTAIN 1994

POTAIN

GRUPE LEGRIS INDUSTRIES

18, Rue de Charbonnières, B.P. 173-F-69132 ECULLY Cedex
Tél. 72.20.20.20 - Télex 375 213 - Fax 72.20.20.00
POTAIN GmbH Deutschland Tel : 06.105.704.0
POTAIN U.K. Great Britain Tel : 0895.44.52.61
Simma POTAIN Italia Tel : 02.97.96.71
POTAIN Portugal Portugal Tel : 02.968.08.89

CITY CRANE MC 80

Ref. 1994.29 LHX 2