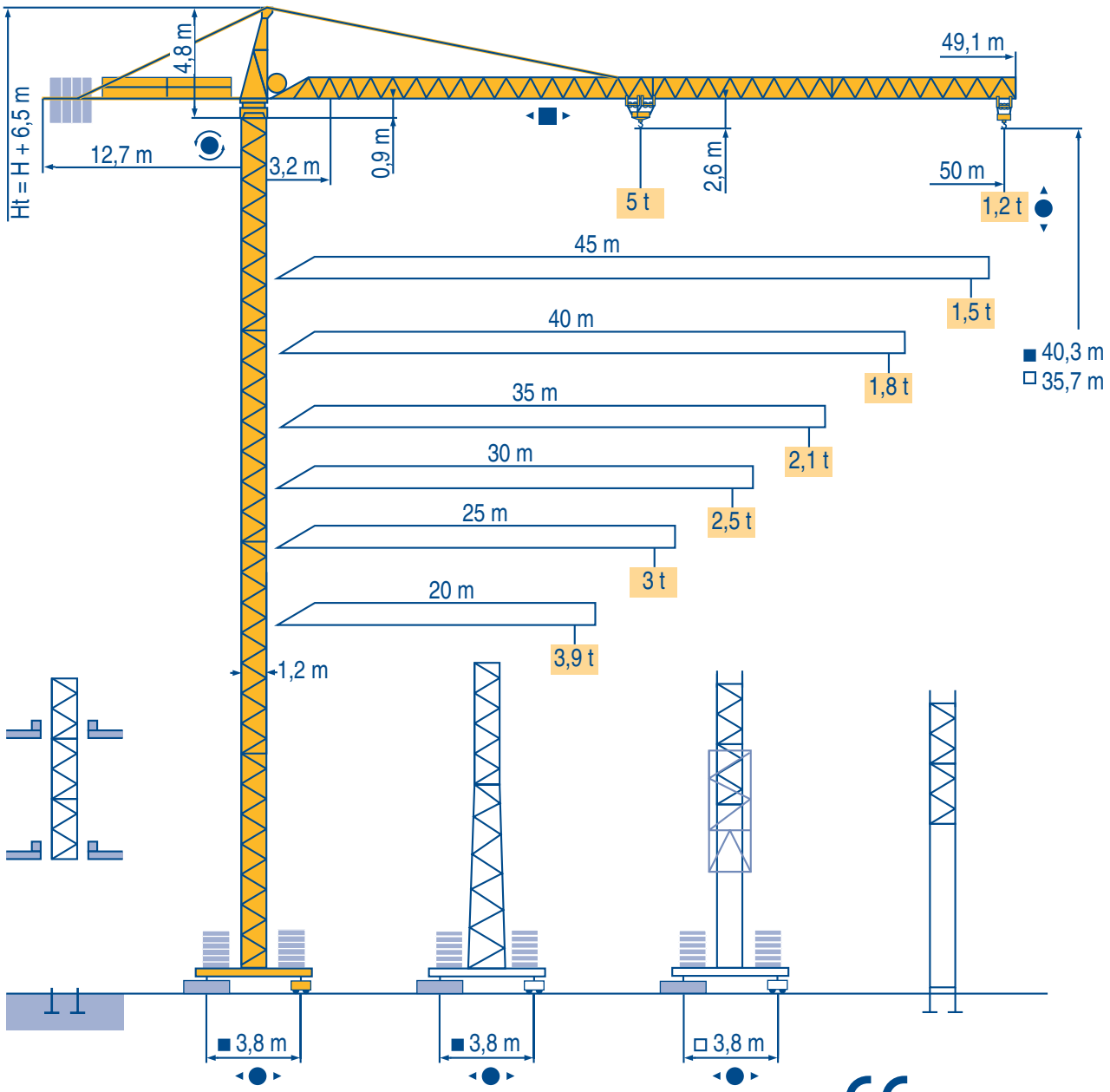


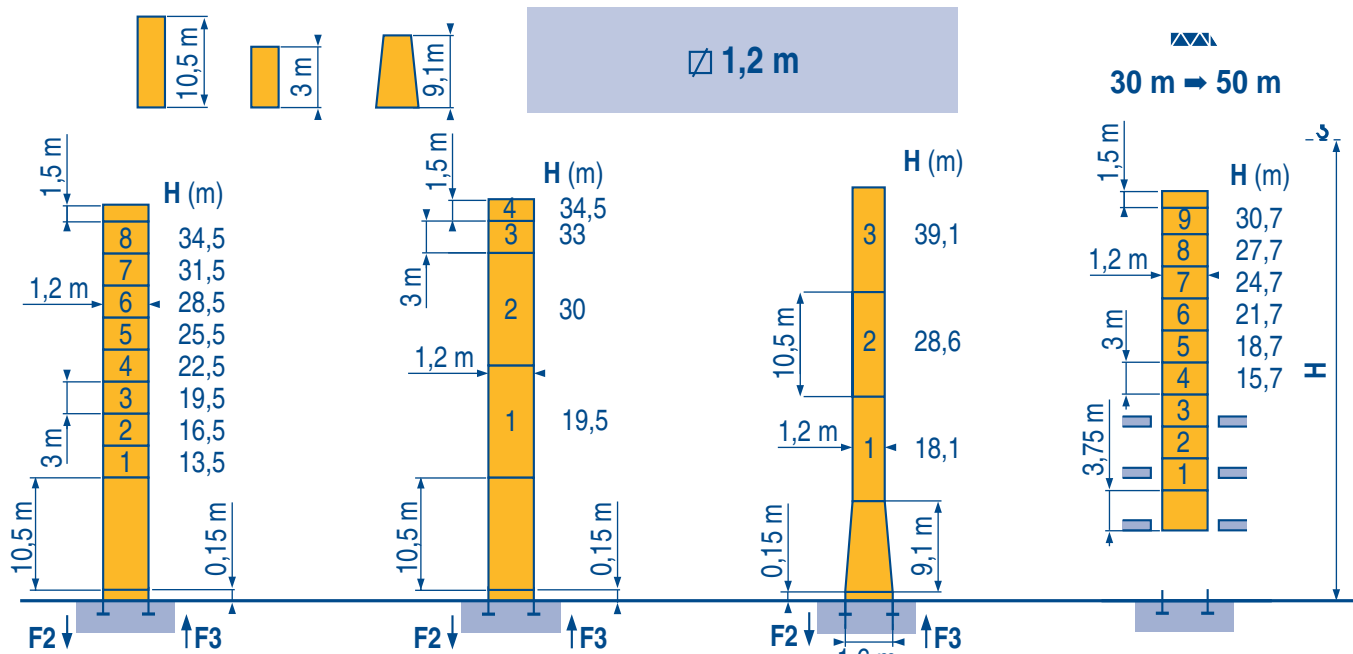
CITY CRANE MC 85 A



- HD
- HDT
- GTMR
- CITY CRANE
- TOPKIT MD
- MR
- MAXI MD
- MAXI TOPKIT

CE FEM 1.001-A3





P 12 C

F2	● 69 t	■ 72 t
F3	● 50 t	■ 54 t
	▲	22 t

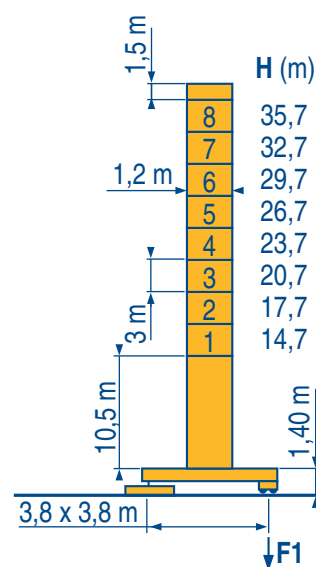
P 12 C

F2	● 69 t	■ 72 t
F3	● 50 t	■ 54 t
	▲	22 t

P 16 A

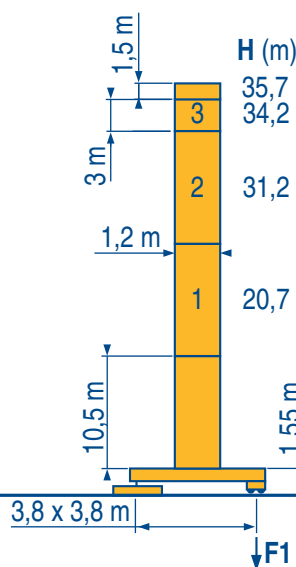
F2	● 60 t	■ 69 t
F3	● 40 t	■ 52 t
	▲	22,5 t

B 125 A



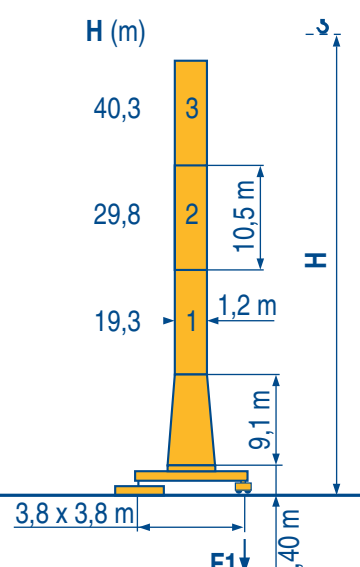
ZF 12 A

F1	● 41 t	■ 41 t
	▲	27,5 t



ZF 12 A

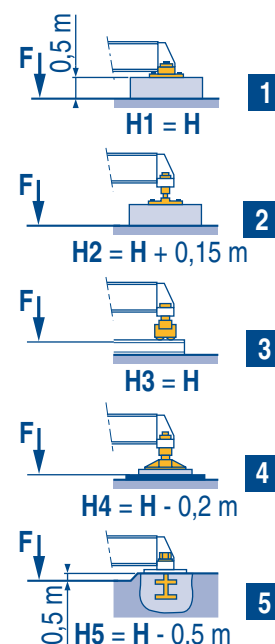
F1	● 41 t	■ 41 t
	▲	27,5 t



ZC 16 A

F1	● 47 t	■ 53 t
	▲	28 t

ZF - ZC



LOM 1

Voir télescopage sur dalles
 ● Réactions en service
 ■ Réactions hors service
 A vide sans lest avec flèche et hauteur maximum.

See climbing crane
 Reactions in service
 Reactions out of service
 Without load and ballast with longest jib and maximum height.

Consultare gru in cavedio
 Reazioni in servizio
 Reazioni fuori servizio
 A vuoto senza zavorra e con braccio massimo e altezza massima.

Siehe Kletterkrane im Gebäude
 ● Reaktionskräfte in Betrieb
 ■ Reaktionskräfte außer Betrieb
 Ohne Last und Ballast mit Maximalausleger und Maximalhöhe.

Vea grua trepadora
 Reacciones en servicio
 Reacciones fuera de servicio
 Sin carga, sin lastre con flecha y altura máxima.

见楼板顶升
 工作状态下的反应
 非工作状态下的反应
 空载, 无配重, 起重臂和高度均为最大值

Courbes de charges
Lastkurven

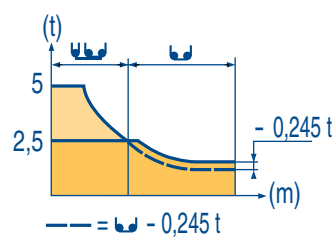
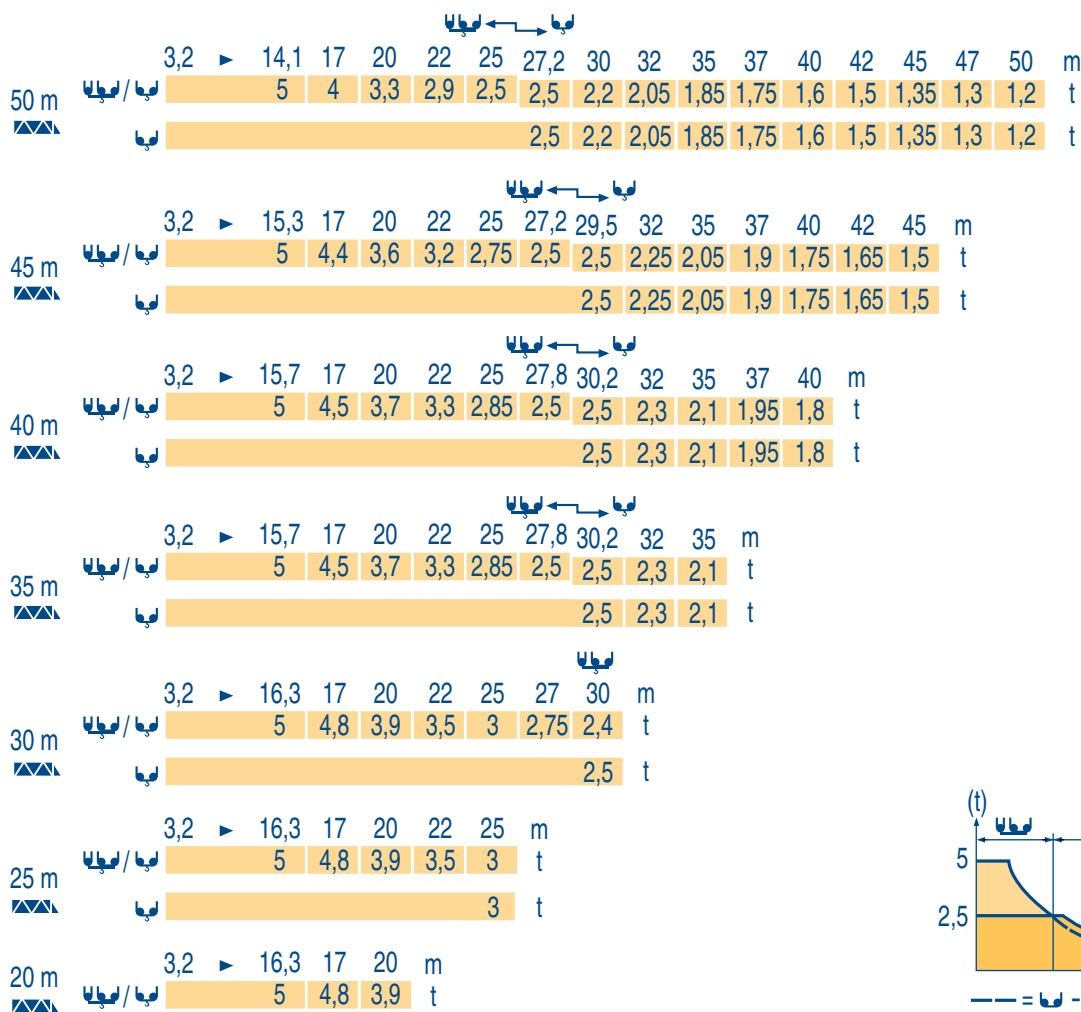
F
D

Load diagrams
Curvas de carga

GB
E

Curve di carico
负荷曲线

I
C



LOM 1

Télescopage sur dalles
Kletterkrane im Gebäude

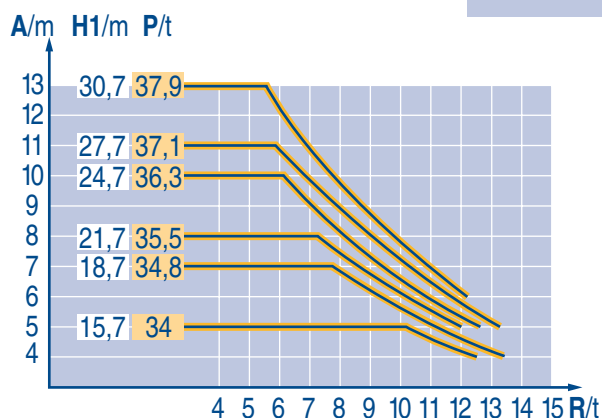
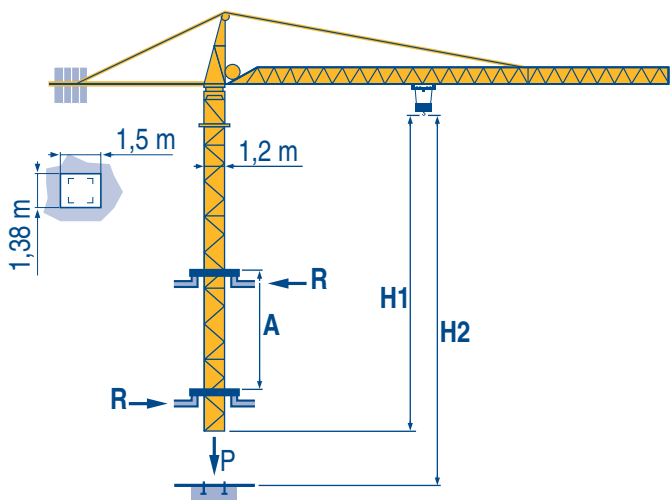
F
D

Climbing crane
Telescopage gruas trepadoras

GB
E

Gru in cavedio
楼板上顶升

I
C



B 125 A

LOM 1

A Distance entre cadres
H1 Hauteur grue
P Poids de la grue (en service)
R Réaction horizontale

F

Distance between collars
Crane height
Crane weight (in service)
Horizontal reaction

GB

Distanza fra i telai
Altezza gru
Peso della gru (in servizio)
Reazione orizzontale

I

A Abstand zwischen den Rahmen
H1 Kranhöhe
P Krangewicht (in Betrieb)
R Horizontalkräfte

















D



Distancia entra marcos
Altura grúa
Peso de la grúa (en servicio)
Reaccion horizontal

E













各附着框之间距离
工作状态下塔机高度
工作状态下塔机重量
水平反力

C

		☺			☺☺			ch - PS hp	kW		
											
▲ ● ▼	15 PC 13	m/min	7	21	42	3,5	10,5	21	15	11	185 m > 185 
		t	2,5	2,5	1,3	5	5	2,6			
	25 PC 13	m/min	6,6	33	66	3,3	16,5	33	25	18,5	322 m > 322 
		t	2,5	2,5	1,3	5	5	2,6			
	25 LVF 13	m/min	4 → 10,5 → 33 → 66			2 → 5,25 → 16,5 → 33			25	18,5	322 m > 322 
		t	2,5	2,5	2,5	1,3	5	5			
◀ ■ ▶	3 D2 V5 	m/min	21 - 42						3	2,2	
	4 D3 V3  	m/min	15 - 30 - 58						4	3	
	RCV 80	tr/min U/min rpm	0 → 0,8						8	5	
	TVD 324 C1	m/min	26						2 x 4	2 x 2,9	
	RT 224	m/min	25						2 x 4	2 x 2,9	

CEI 38 	IEC 38	kVA	
400 V (+6% -10%) 50 Hz		15 PC : 25 kVA 25 PC - 25 LVF : 35 kVA	84/534 - 87/405

LOM 1

     	Levage	F	Hoisting	GB	Sollevamento	I
	Distribution		Trolleying		Distribuzione	
	Orientation		Slewing		Rotazione	
	Translation		Travelling		Traslazione	
	Conforme aux directives CEE 84/534 et 87/405 sur le niveau acoustique		In compliance with the EEC 84/534 and 87/405 Instructions on noise level		Conforme alle direttive CEE 84/534 e 87/405 sul livello acustico	
Nous consulter		Consult us		Consultateci		
     	Heben	D	Elevación	E	起升	C
	Katzfahren		Distribución		变幅	
	Schwenken		Orientación		回转	
	Kranfahren		Traslación		行走	
	Gemäss EWG-Richtlinien 84/534 und 87/405 für den Schall-Leistungspegel		Conforme con las directivas CEE 84/534 y 87/405 sobre el nivel acustico		符合 CEE 84/534 - CEE 87/405 声晌度规定	
Auf Anfrage		Consultarnos		请向我方咨询		

Réf. 1997.52 LOM 1



18.Rue de Charbonnières, B.P. 173-F
69132 ECULLY Cedex
Tél. (33)04.72.20.20.20
Fax (33)04.72.20.20.00
http://www.potain.fr
E-mail : mkt@potain.fr

CITY CRANE MC 85 A

Copyright.Reproduction interdite © POTAIN 1997

Deutschland
POTAIN GmbH Tel : 06.105.704.0
Italia
POTAIN S.p.A. Tel : 039.65.631
China
Zhangjiagang POTAIN Tel : 520. 877.1451

Courtesy of Crane.Market