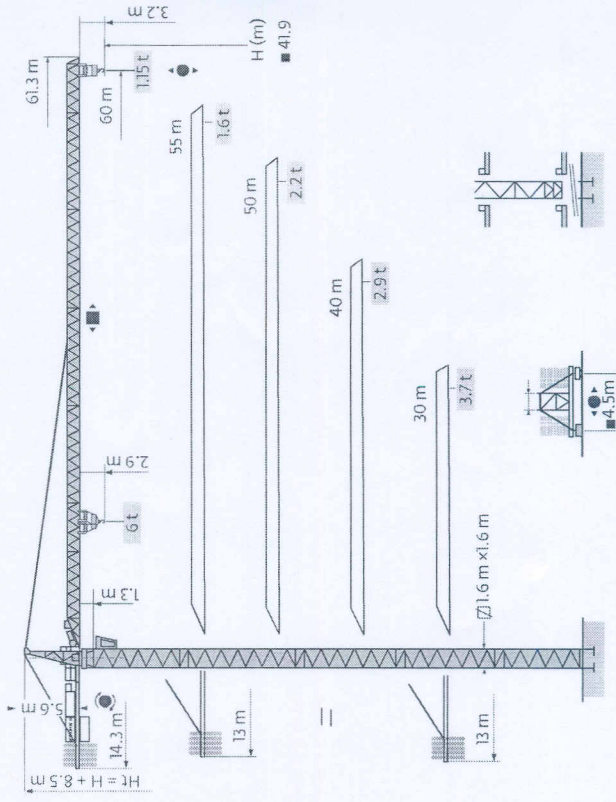


Potain MC 125



Механизмы
Агрегаты
Механизмы
Механизмы
Механизмы

400V(+10%-10%) 50 Hz		±4%		±4%		±4%		hp	kW	☝	
•	3ЗРС15 (GH)	m/min	10	40	80	5	20	40	33	24	400 m
	t	3	3	1.5	6	6	3				
•	3ЗРС15	m/min	6	37.6	75	3	19	37.5	33	24	260 m
	t	3	3	1.5	6	6	3				
•	4D3V3	m/min	15	→	30	→	58		4	3	
•	RCV145	t/min	0	→	0.8				2 × 6	2 × 4.4	
•	RT324C1	m/min	12.5	→	25				2 × 7	2 × 5.2	

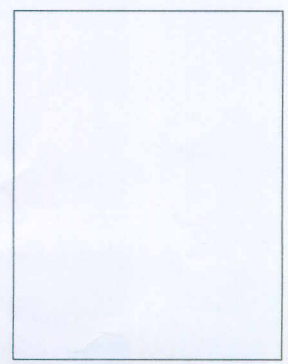
IEC 60204-32		NVA		3ЗРС 50kVA	
480V(+6%-10%) 50 Hz					

480V(+6%-10%) 50 Hz		±4%		±4%		±4%		hp	kW	☝	
•	3ЗРС15 (GH)	m/min	12	48	96	6	24	48	39.6	28.8	400 m
	t	3	3	1.5	6	6	3				
•	3ЗРС15	m/min	7.2	45.12	90	3.6	22.8	45	39.6	28.8	260 m
	t	3	3	1.5	6	6	3				
•	4D3V3	m/min	18	→	36	→	69.6		4.8	3.6	
•	RCV145	t/min	0	→	0.56				2 × 7.2	2 × 5.28	
•	RT324C1	m/min	15	→	30				2 × 8.4	2 × 6.24	

IEC 60204-32		NVA		3ЗРС 60kVA	
480V(+6%-10%) 60 Hz					

- FR** Levage
- DE** Heben
- EN** Hoisting
- ES** Elevación
- IT** Sollevamento
- PT** Elevação
- RU** Подъем
- FR** Distribution
- DE** Verteilen
- EN** Trolleying
- ES** Distribución
- IT** Distribuzione
- PT** Distribuição
- RU** Передача троса
- FR** Traction
- DE** Ziehen
- EN** Towing
- ES** Trazacción
- IT** Trazione
- PT** Tração
- RU** Передача троса

! Document commercial non contractuel. Pour toute information, contactez votre représentant local. **!** Document comercial no contractual. Para cualquier información, contacte a su representante correspondiente. **!** Document commercial is not legally binding. For any technical information, contact your local representative. **!** Documento comercial no contractual. Para cualquier información técnica, contacte a su representante correspondiente. **!** Documento comercial não vinculativo. Para qualquer informação técnica, contacte o seu representante correspondente. **!** Документ коммерческой информации не является юридически обязательным. Для получения соответствующей информации обращайтесь к своему представителю.

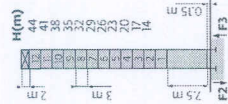


Manitowoc - Americas
Manitowoc, Wisconsin, USA
Tel: +1 920 833 6278
Shady Grove, Pennsylvania, USA
Tel: +1 717 597 8121 • Fax: +1 717 597 4062

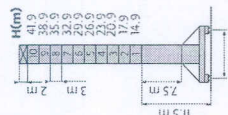
Manitowoc - Europe, Middle East & Africa
Ecully, France
Tel: +33 (0)47 28 2020 • Fax: +33 (0)4 7 218 2000

Manitowoc - Asia Pacific
Shanghai, China
Tel: +86 216 457 0066 • Fax: +86 216 457 4555

Max / Réactions
 Mast / Reaktionen
 Mast / Reaktionen
 Torre / Reacciones
 Torre / Reacciones
 Крановый башни
 / Реакции

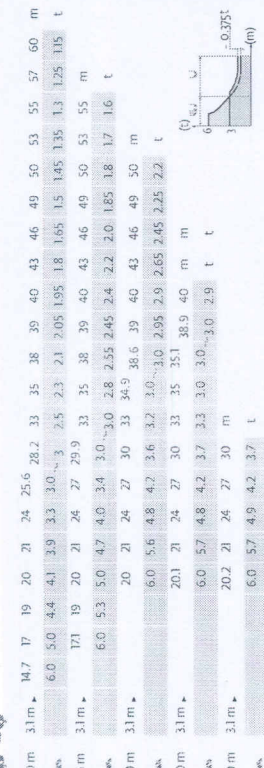


PI6A
 F1* 291 t
 F2* 141 t
 F3* 69 t
 F4* 141 t
 F5* 291 t
 F6* 141 t
 F7* 69 t
 F8* 141 t
 F9* 291 t
 F10* 141 t

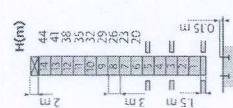
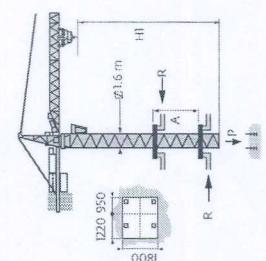


SB16A
 F1* 56 t
 F2* 87 t
 F3* 43 t

Courbes de charges
 Lastendiagramme



Telescopage sur dalles
 Kletterkran im Gebäude
 Climbing crane
 Telescopage grues
 trepadoras
 Grúa in caveo
 Telescopagem sobre lajes
 Кран, ползущий внутри
 здания

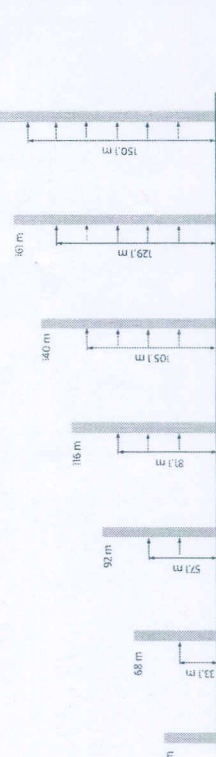
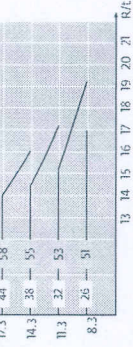


Lest de contre-flèche
 Gegenauflagerballast
 Counter-jib ballast
 Laste de contra flecha
 Contropeso
 Lastros de contra lança
 Балласт на консоль

Height (m)	3700 kg	2250 kg	Weight (kg)
60 m	4	1	17050
55 m	5	0	18500
50 m	4	1	17050
40 m	2	3	1450
30 m	2	2	11900

Lest de base
 Grundballast
 Base ballast
 Lastre de base
 Zavorra di base
 Lastros de base
 Базовый балласт

Height (m)	41.9	38.9	35.9	32.9	29.9	26.9	23.9	20.9	17.9	14.9
60 m	78	66	66	54	54	48	48	48	48	48



Anclajes
 Verankerungen
 Anchorages
 Anclaje
 Ancoraggio
 Anclagem
 Рамки для крепления
 к зданию

- FR** Réactions en service / Reactions hors service
- DE** Reaktionskräfte in Betrieb / Reaktionskräfte außer Betrieb
- EN** Reactions in service / Reactions out of service
- ES** Reacciones en servicio / Reacciones fuera de servicio
- IT** Reazioni in servizio / Reazioni fuori servizio
- PT** Reações em serviço / Reações fora do serviço
- RU** Реакции при работе / Реакция в покое

- RU** Высоты стоек / Высоты стоек
- PT** Distância entre quadros / Acum da grua
- IT** Distanza fra i telai / Altezza gru
- ES** Distancia entre marcos / Altura grúa
- EN** Distance between collars / Crane height
- DE** Abstand zwischen den Masten / Reihhöhe
- FR** Distance entre cadres / Hauteur grue
- A** Distance entre cadres / Hauteur grue
- H** Hauteur grue
- P** Poids de la grue (en service) / Weight of the crane (in service)
- R** Réaction horizontale / Horizontal reaction